

# ADVANCEMENTS IN ENDOSCOPY

## Food Bolus - Meat Impaction

October 11, 2017

### Introduction

Food is unquestionably the most common foreign body deliberately put into the upper GI tract. A food bolus impaction caused by a large piece of meat lodged into the esophagus will lead to an endoscopic intervention by a skilled gastroenterologist for its safe removal.

### Problem

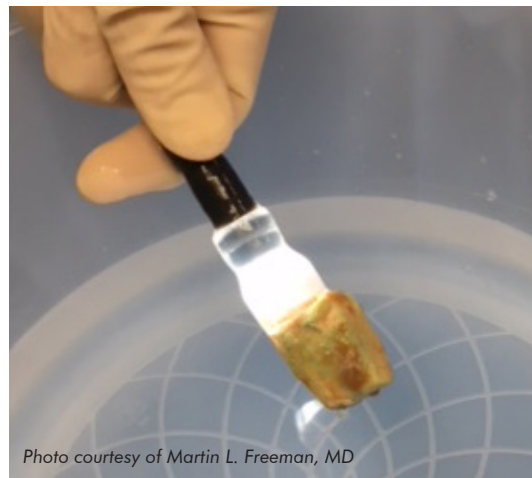
An esophageal food bolus impaction is an emergency that requires a skilled endoscopist to use various grasping devices and advanced techniques. Pushing a food bolus into the stomach is not recommended due to risk of esophageal perforation.

### Solution

eSuction<sup>®</sup> is the latest advancement in endoscopic retrieval of food bolus impactions. The device combines the use of snare technology with endoscopic suction to aid in the retrieval of food bolus impactions, foreign bodies and excised tissue such as polyps.

### Clinical Use

A large piece of impacted chicken meat was successfully removed from the esophagus via endoscopy with the assistance of the eSuction<sup>®</sup> device.



*Photo courtesy of Martin L. Freeman, MD*

### Discussion

In the past, the use of various grasping devices such as polypectomy snares, retrieval nets and banding caps have all played an important role in successful food impaction removals. Each of these approaches present their own limitations. Many result in the requirement of multiple passes of the endoscope extending the procedure time while other devices are used "off-label". A purpose built suction adapter designed specifically with retrieval in mind is now available.



EndoTherapeutics.com • Toll Free: **844.400.ENDO** (3636)  
Endo-Therapeutics, Inc. • 15251 Roosevelt Blvd, Suite 204 • Clearwater, FL 33760

Endo<sup>™</sup> and eSuction<sup>®</sup> are registered trademarks of Endo-Therapeutics, Inc. U.S. Patent 9,549,761 ©2017 Endo-Therapeutics, Inc. All rights reserved. MKT-013 Rev B